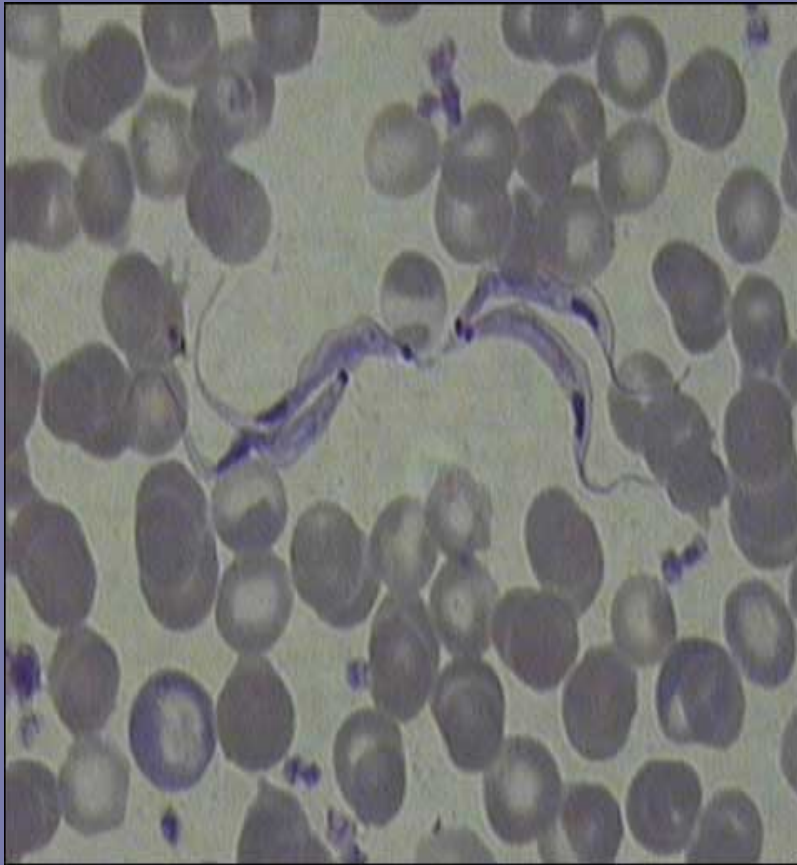


Trypanosoma lewisi



- D. Eukarya
- K. Protista
- Ph. Euglenozoa
- Magnification 1000x
- Seen w/ RBCs. Eel like cells. Ea with a dark oval shaped nucleus and a smaller kinetoplast. Single flagellum extends entire length of cell and is attached by an undulating membrane.



Fasciola hepatica

Sheep Liver Fluke



- D. Eukarya
- K. Animalia
- Ph. Platyhelminthes
- Cl. Trematoda
- Magnification



Fasciola hepatica

Sheep Liver Fluke

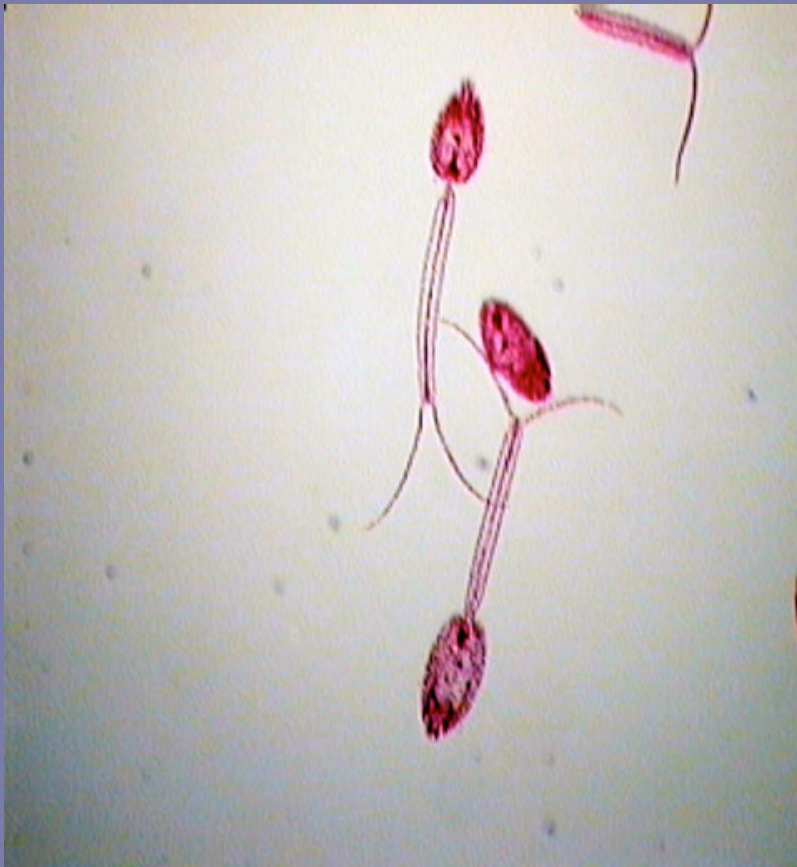


- D. Eukarya
- K. Animalia
- Ph. Platyhelminthes
- Cl. Trematoda
- Magnification 10x
- Cercaria, larval form that exits the water snail and forms a cyst on grass.

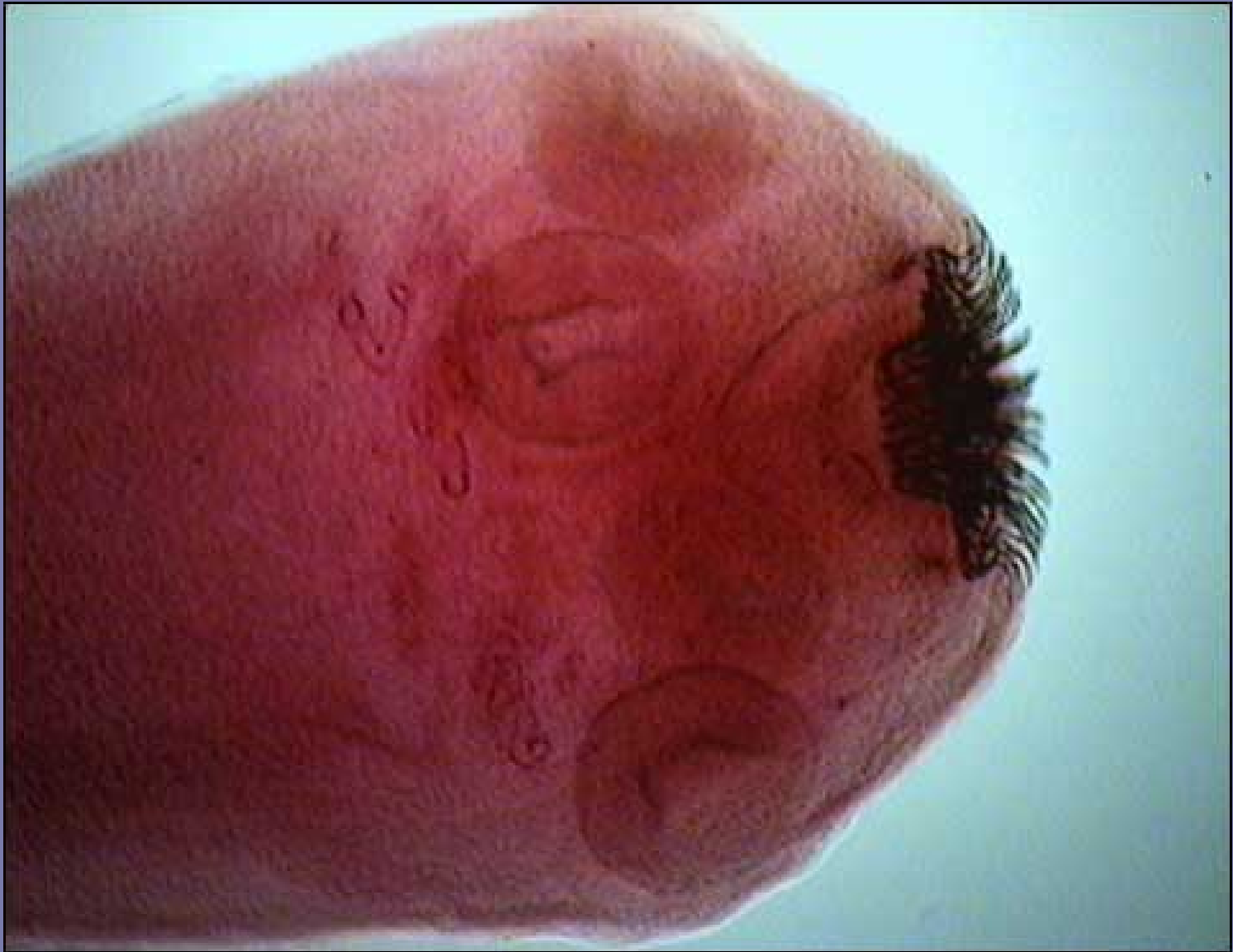


Schistosoma

Blood fluke



- D. Eukarya
- K. Animalia
- Ph. Platyhelminthes
- Cl. Trematoda
- Magnification 40x
- Blood fluke cercariae develop within water snails (Interm. Host) exit snails, swim until they find humans (Def. Host) and burrow thru skin. Adults live in blood vessels.

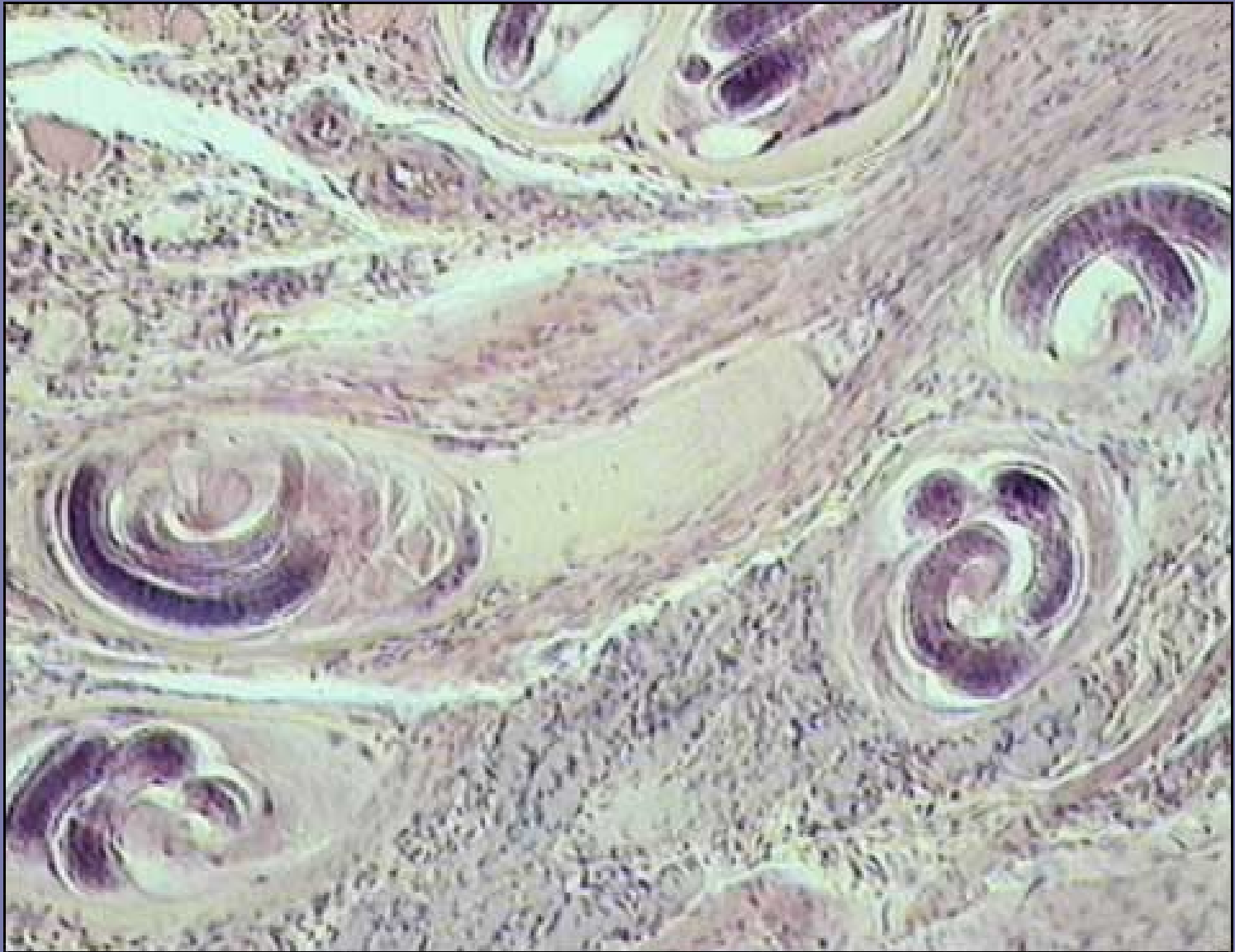


Taenia pisiformis

Dog Tapeworm



- D. Eukarya
- K. Animalia
- Ph. Platyhelminthes
- Cl. Cestoda
- Magnification 40x
- Tapeworm scolex which attaches to the gut wall. 4 circular suckers and ring of outward projecting hooks are used for attachment.

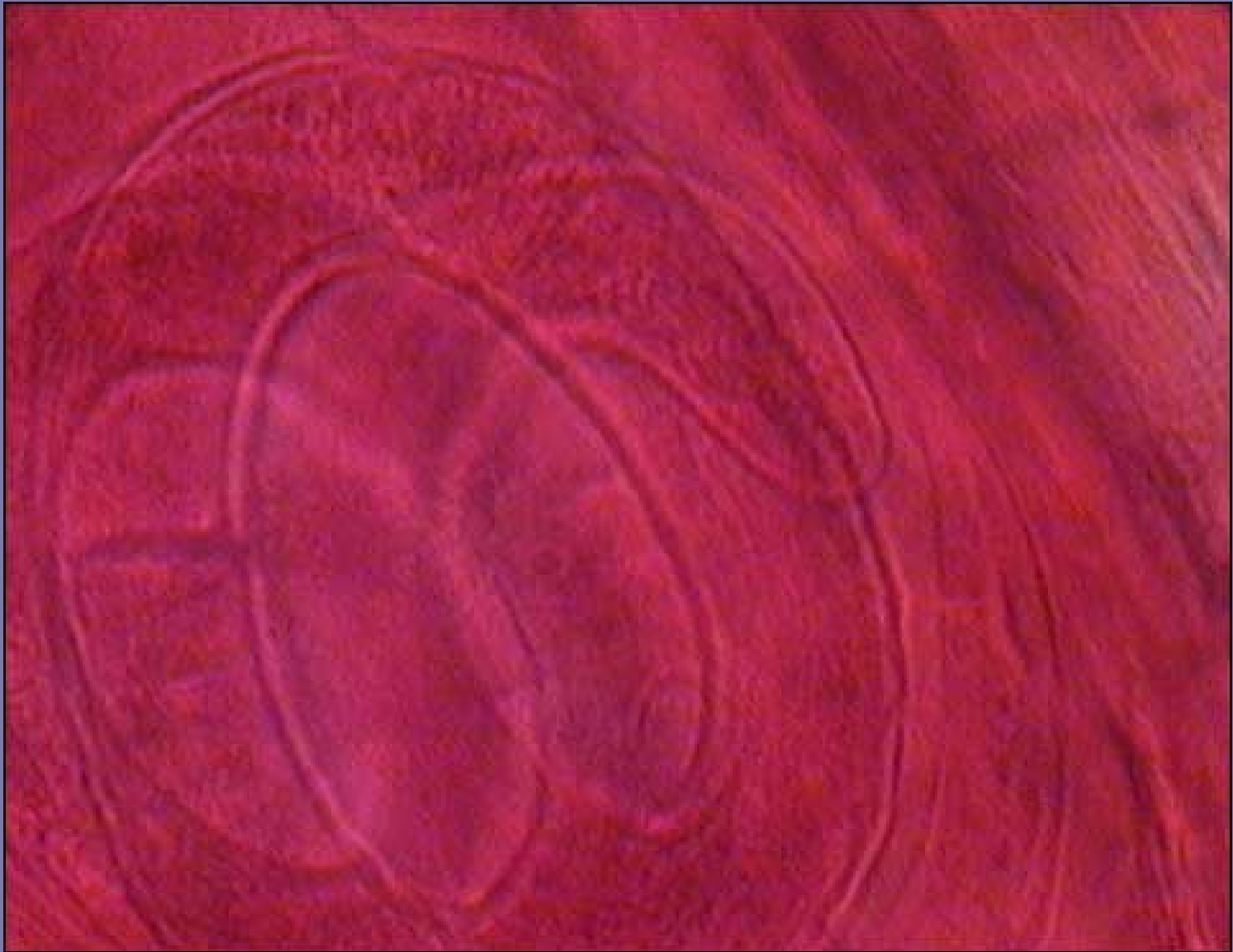


Trichinella spiralis larvae

Trichinosis



- D. Eukarya
- K. Animalia
- Ph. Aschelminthes
- Magnification 100x
- Larvae in muscle tissue....probably smooth muscle.



Trichinella spiralis larvae

Trichinosis



- D. Eukarya
- K. Animalia
- Ph. Aschelminthes
- Magnification 400x
- Encysted larvae in muscle tissue.



Necator americanus



- D. Eukarya
- K. Animalia
- Ph. Aschelminthes
- Magnification 20x
- Adult male hookworm. Mouth contains sharp cutting teeth.

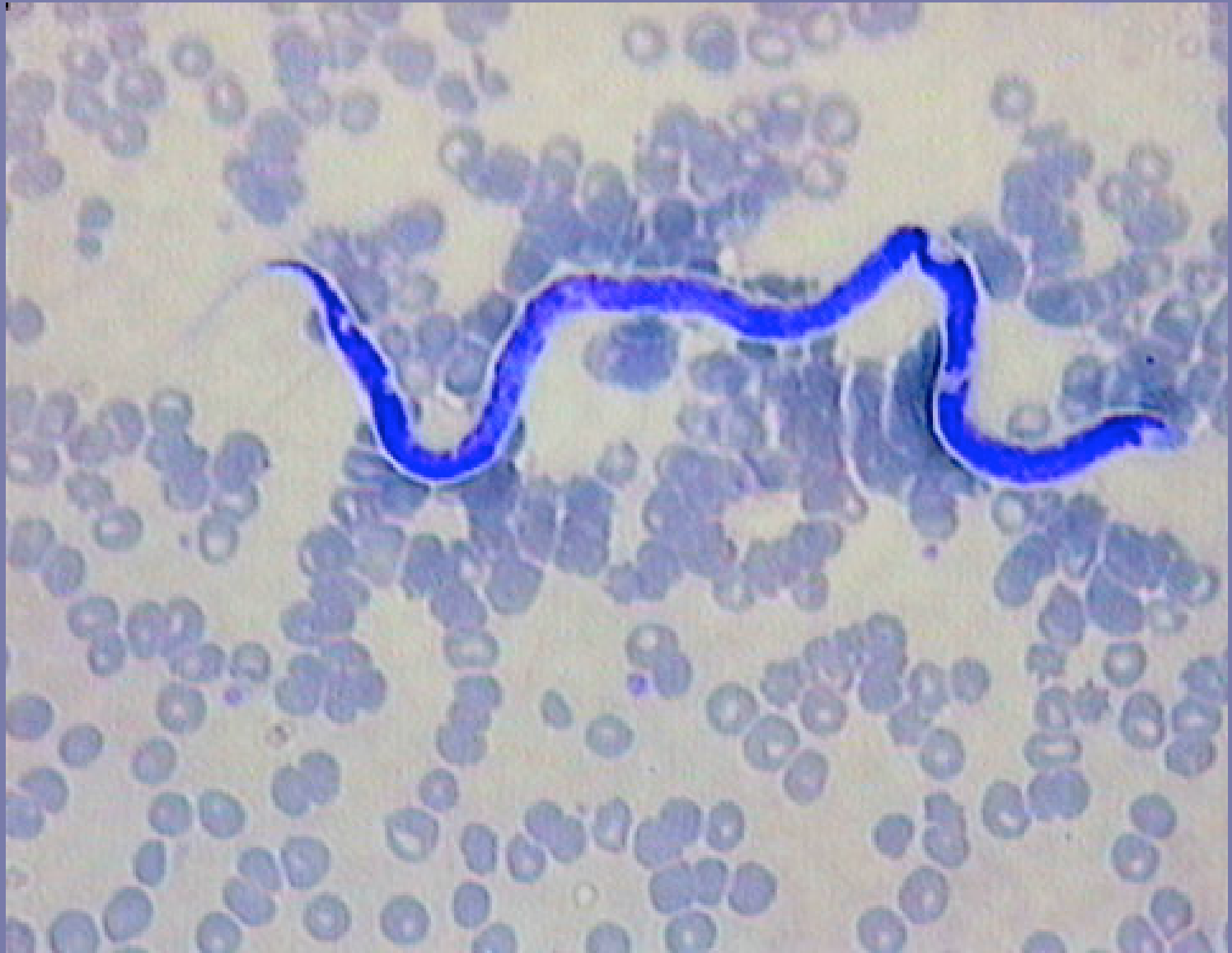


Necator americanus

Hookworm

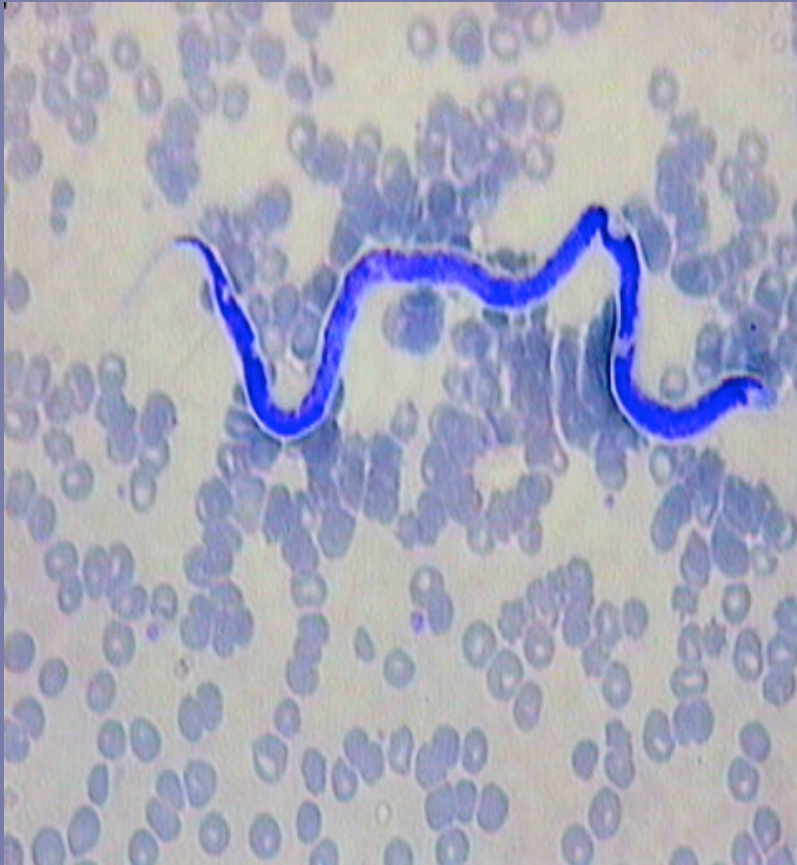


- D. Eukarya
- K. Animalia
- Ph. Aschelminthes
- Magnified 100x
- Infective larvae of hookworm found in the soil.



Dirofilaria

Canine Heart Worm

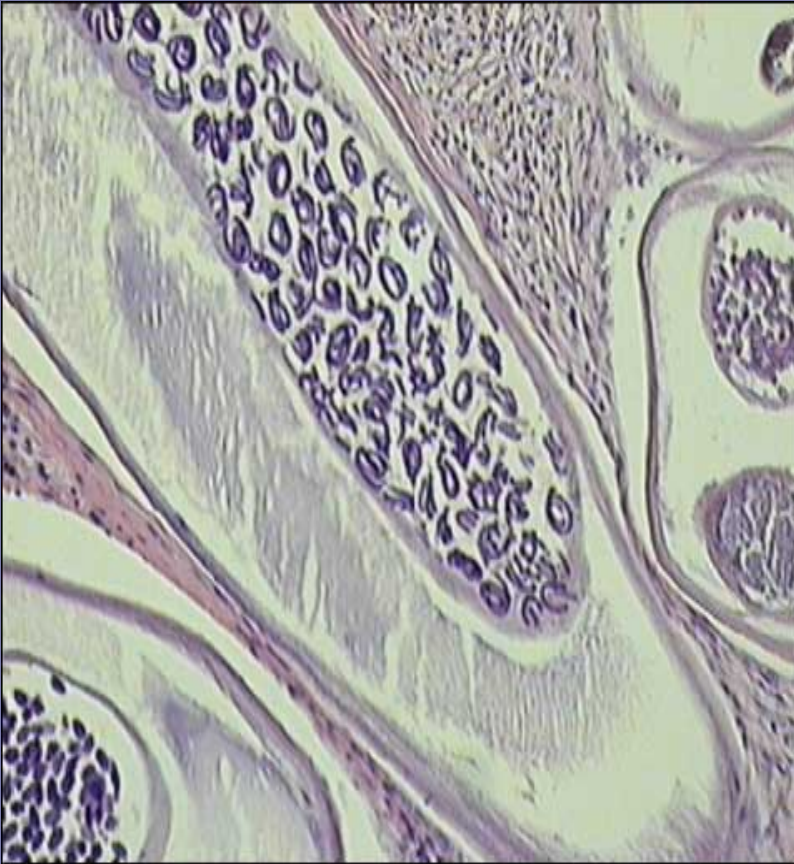


- D. Eukarya
- K. Animalia
- Ph. Aschelminthes
- Magnified 400x
- Filarial larval stage shown among the RBCs. These are released by the female worms in the dogs heart. Picked up by a mosquito and transferred to a new host.



Onchocerca volvulus

River Blindness



- D. Eukarya
- K. Animalia
- Ph. Aschelminthes

Magnification 100x

XS of an adult worm showing uterus full of filarial larvae.



Dermacentor andersoni

Rocky Mountain Wood Tick



- D. Eukarya
- K. Animalia
- Ph. Arthropoda
- Magnification 10x
- Dark oval genital pore between hind legs. Block like patches along bottom margin of abdomen.

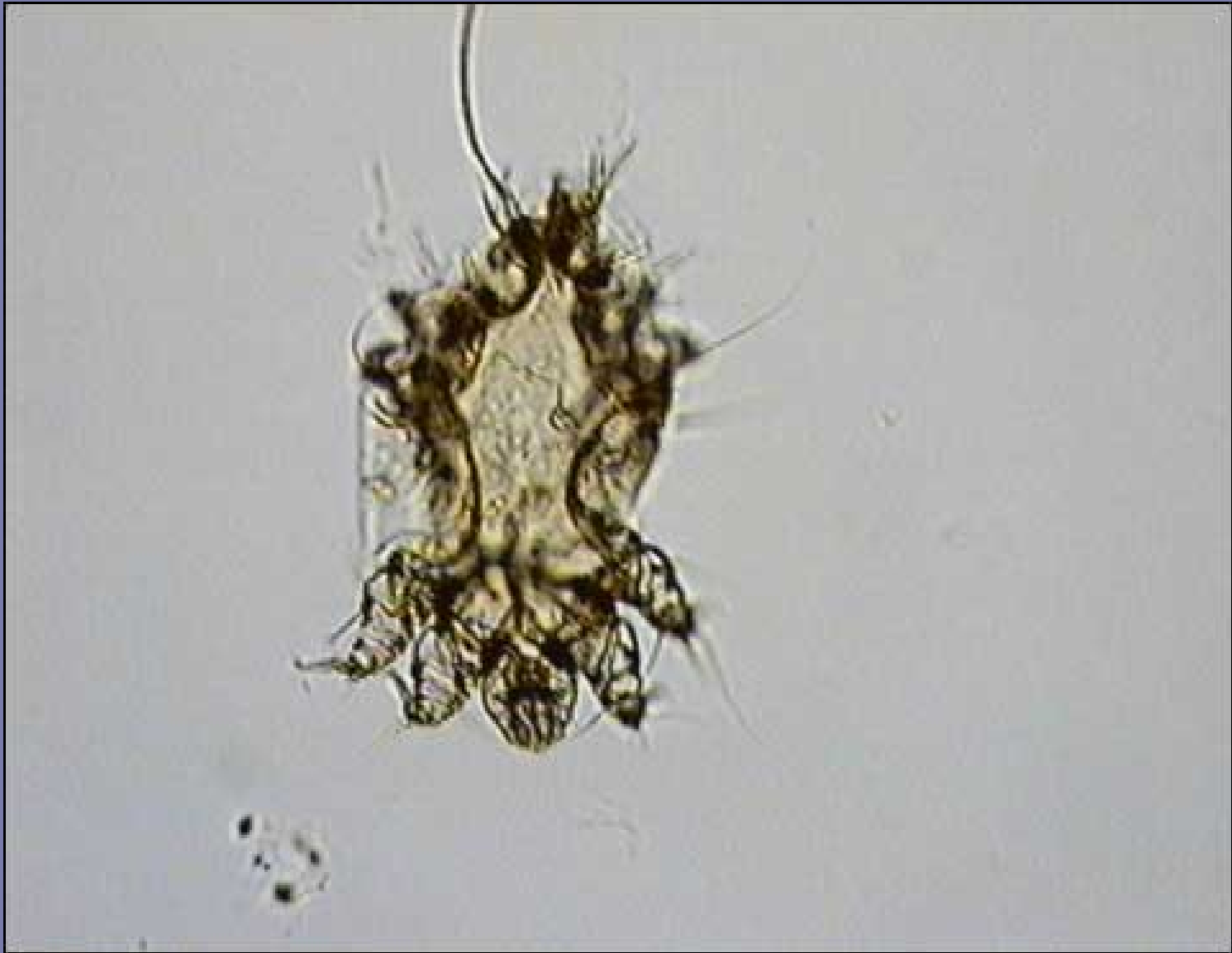


Ixodes dammini

Deer Tick



- D. Eukarya
- K. Animalia
- Ph. Arthropoda
- Magnification 10x



Sardcoptes scabiei

Scabies or itch mite



- D. Eukarya
- K. Animalia
- Ph. Arthropoda
- Magnification 100x
- Oval, nearly transparent with numerous bristles pointing outward. 8 legs.

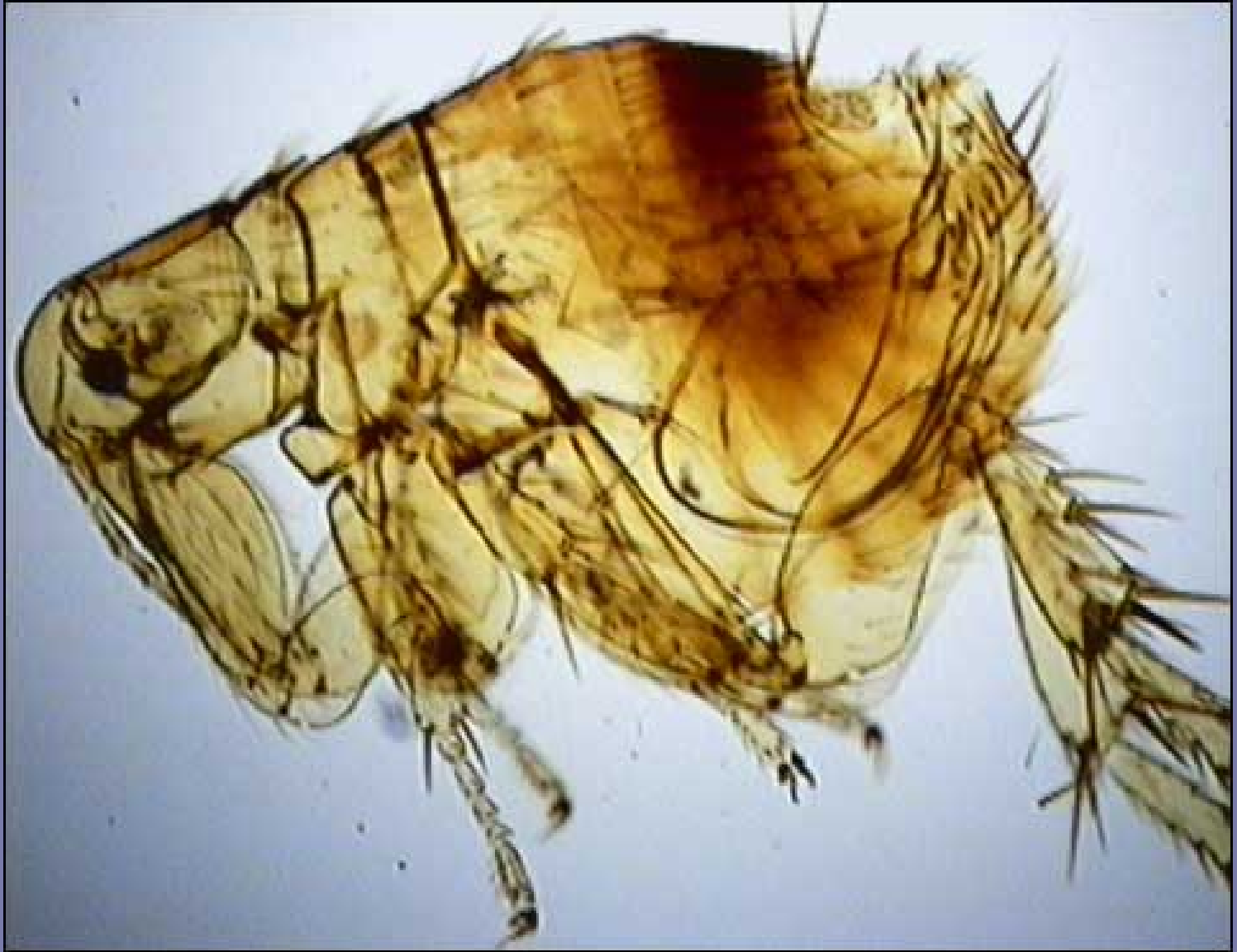


Pediculus humanus capitis

Head louse



- D. Eukarya
- K. Animalia
- Ph. Arthropoda
- Magnification 25x
- Ectoparasite
- Notice hooked claws. 6 jointed legs.



Xenopsylla cheopis

Rat flea



- D. Eukarya
- K. Animalia
- Ph. Arthropoda
- Magnification 40x
- Ectoparasite. Flattened segmented body. 6 legs. Highly adapted for jumping.
- Bristles pointing backwards.



Culex pipiens



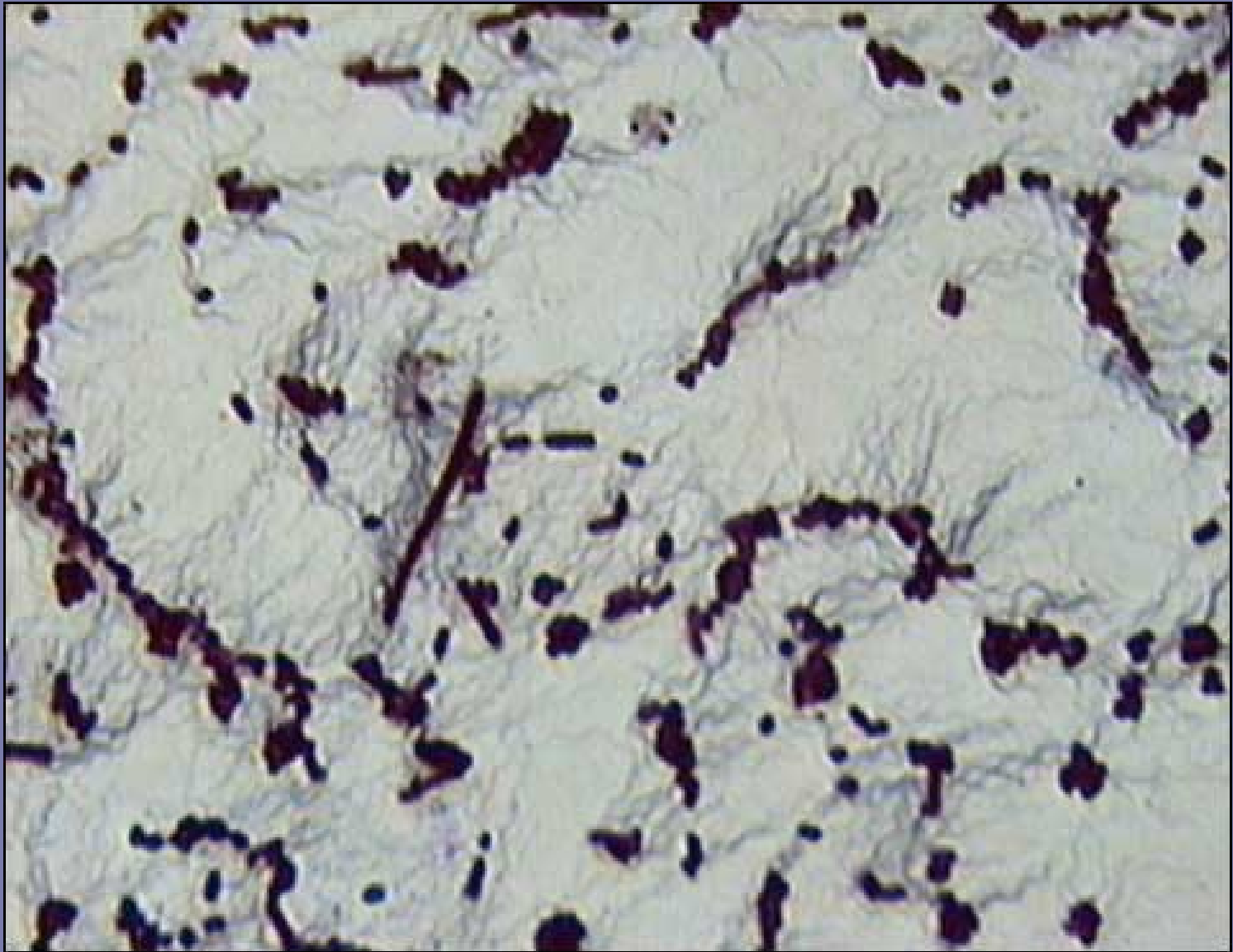
- D. Eukarya
- K. Animalia
- Ph. Arthropoda
- Mosquito
- Magnification 10x
- Insect with 6 slender jointed legs
- Transmits WNV.



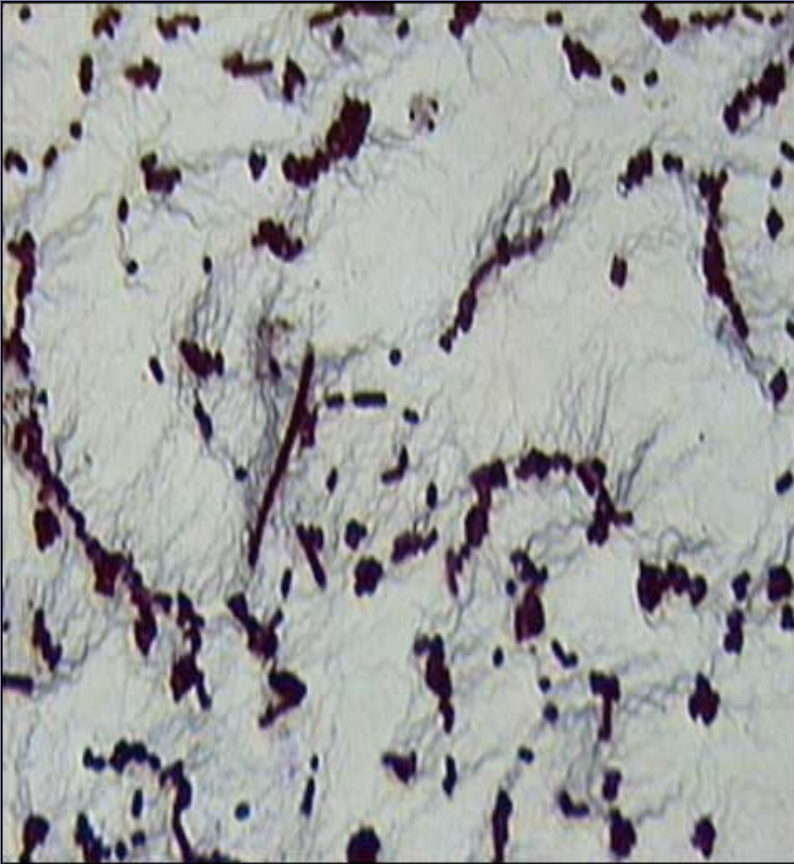
Amphitrichous Flagellar Stain



- Magnification 1000x
- Spiral shaped bacteria with polar or amphitrichous flagellar arrangement.



Peritrichous flagella



- Magnification 1000x
- Rod shaped bacteria stained with a flagellar stain.

