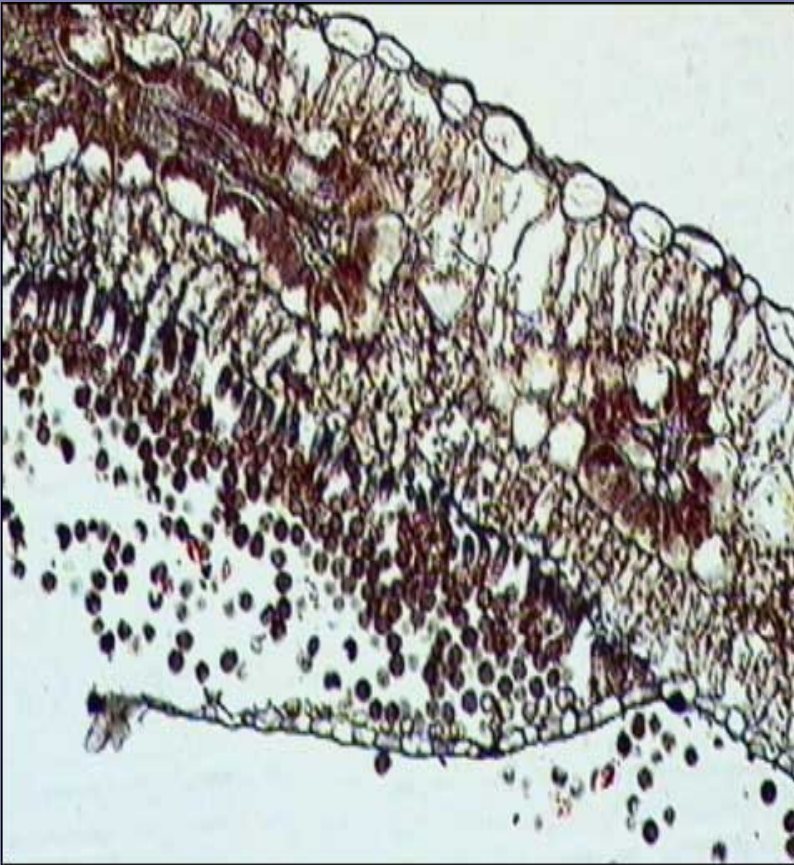




# *Albugo bliti* or white rust



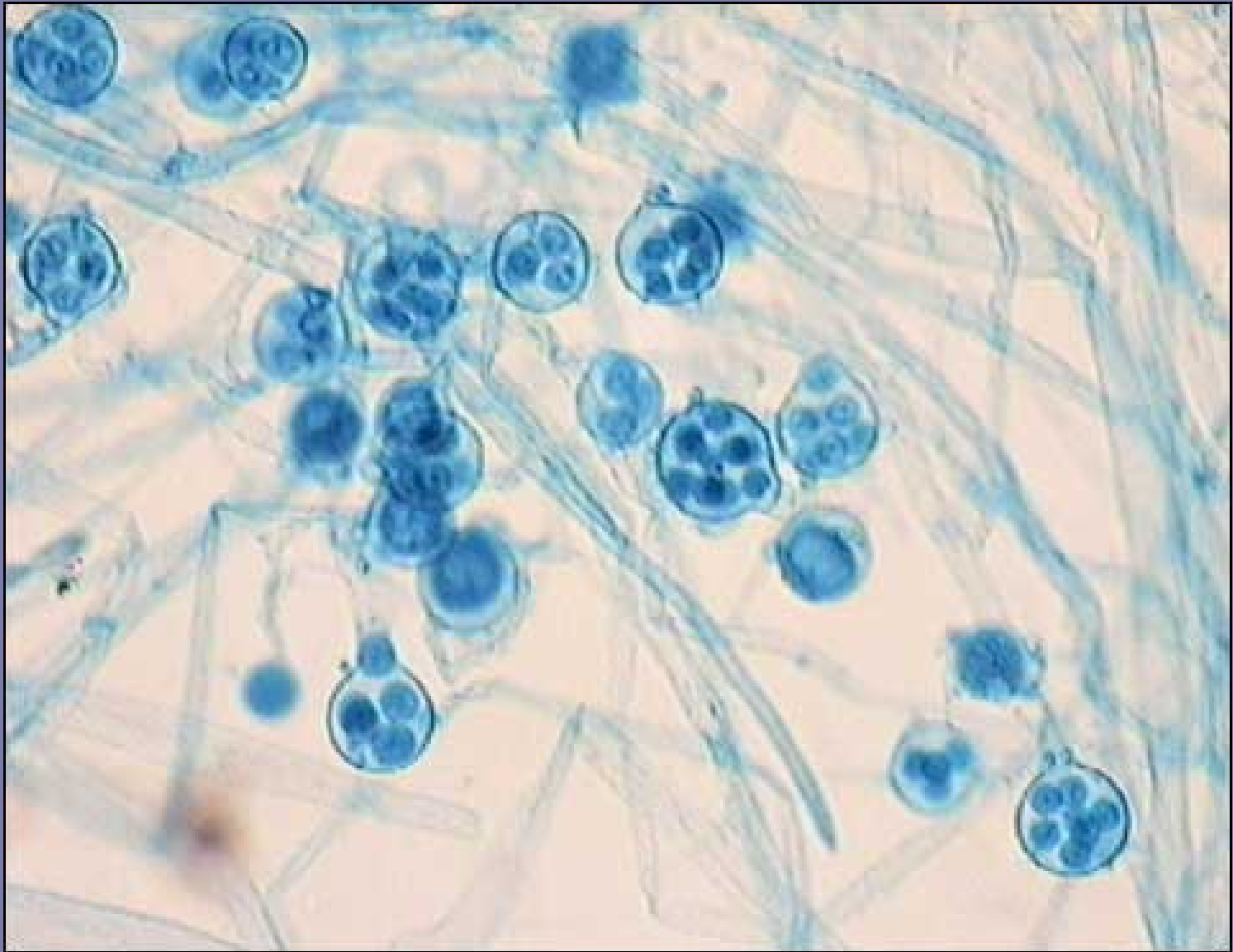
- D. Eukarya
- K. Fungi
- Ph. Oomycota
- Cl. Oomycetes
- Magnified 100x
- Leaf xs showing the asexual sporangiospores within a sac of leaf epidermis



# *Saprolegnia* or water mold

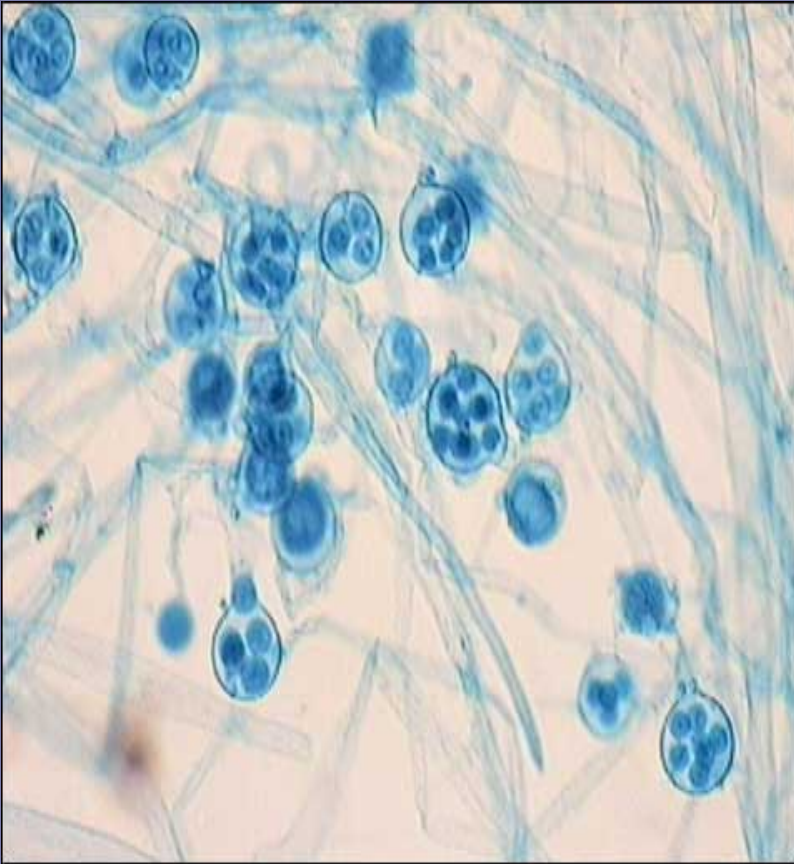


- D. Eukarya
- K. Fungi
- Ph. Oomycota
- Cl. Oomycetes
- Magnification 100x
- Hyphae appear as thread-like filaments. The sporangium contains asexual sporangiospores.





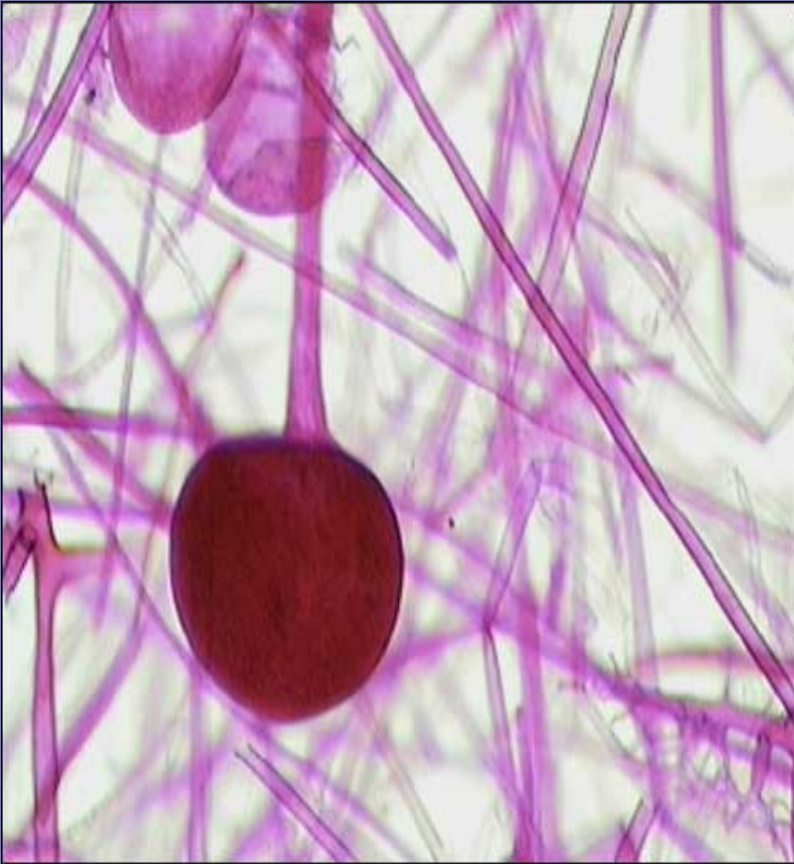
# *Saprolegnia* or water mold



- D. Eukarya
- K. Fungi
- Ph. Oomycota
- Cl. Oomycetes
- Magnification 100x
- Oogonia contain sexual oospores.
- No antheridia are seen.



# *Rhizopus stolonifer* or bread mold



- D. Eukarya
- K. Fungi
- Ph. Zygomycota
- Cl. Zygomycetes
- Magnification 100x
- Oval shaped sporangium containing asexual sporangiospores.

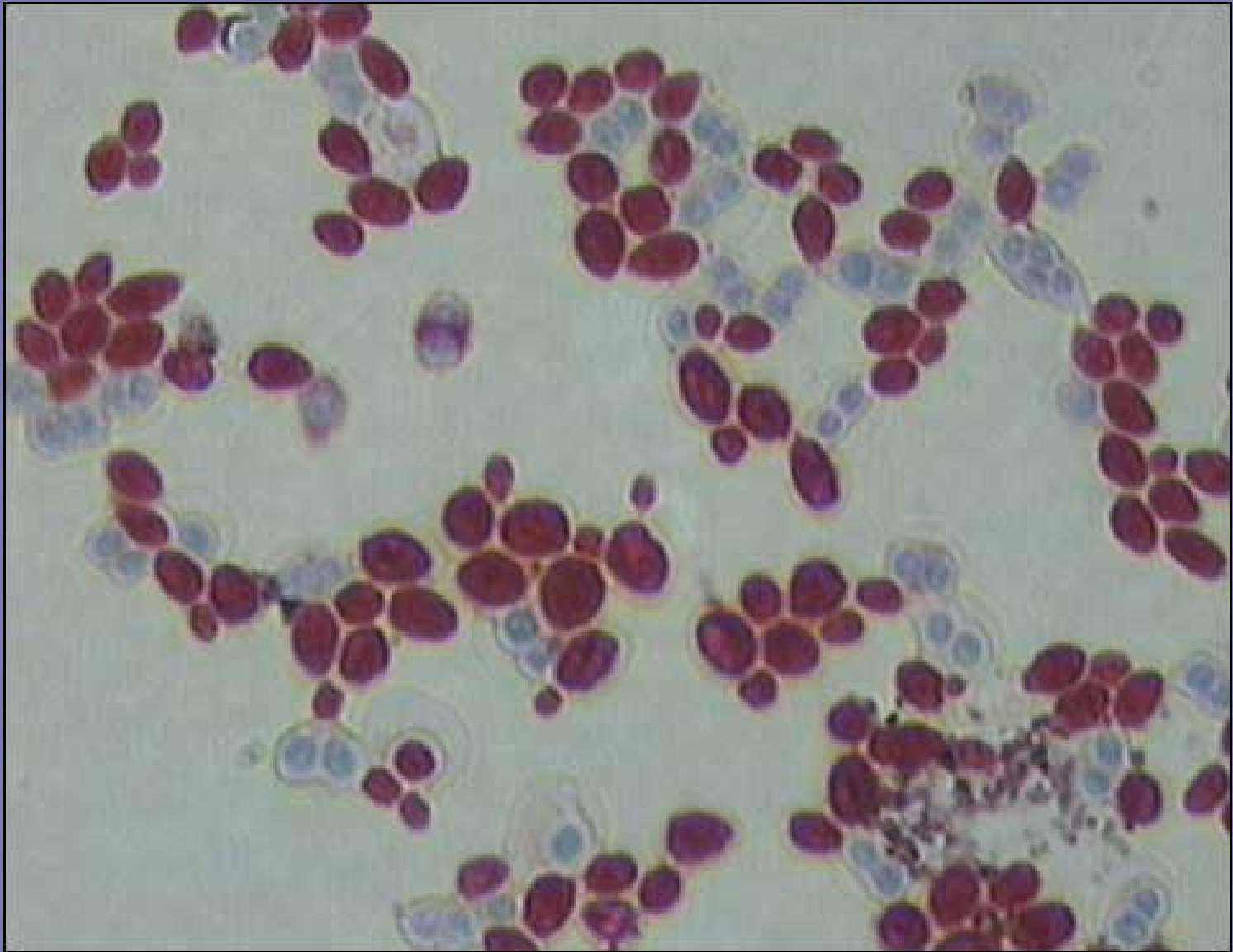




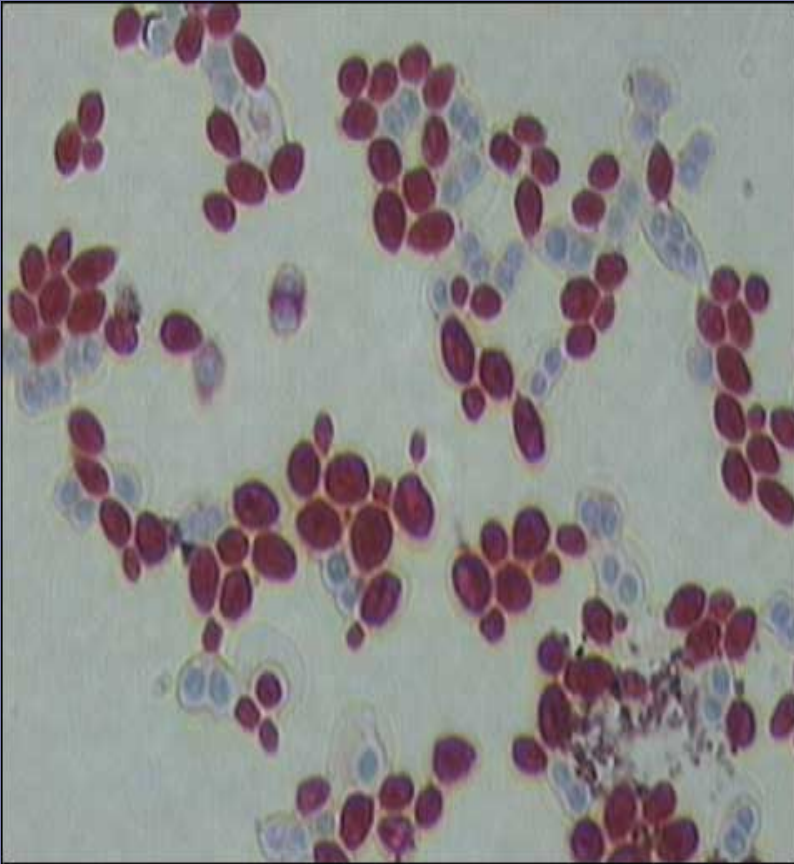
# *Rhizopus stolonifer* or bread mold



- D. Eukarya
- K. Fungi
- Ph. Zygomycota
- Cl. Zygomycetes
- Magnification 100x
- Zygosporangia contain sexual zygospores



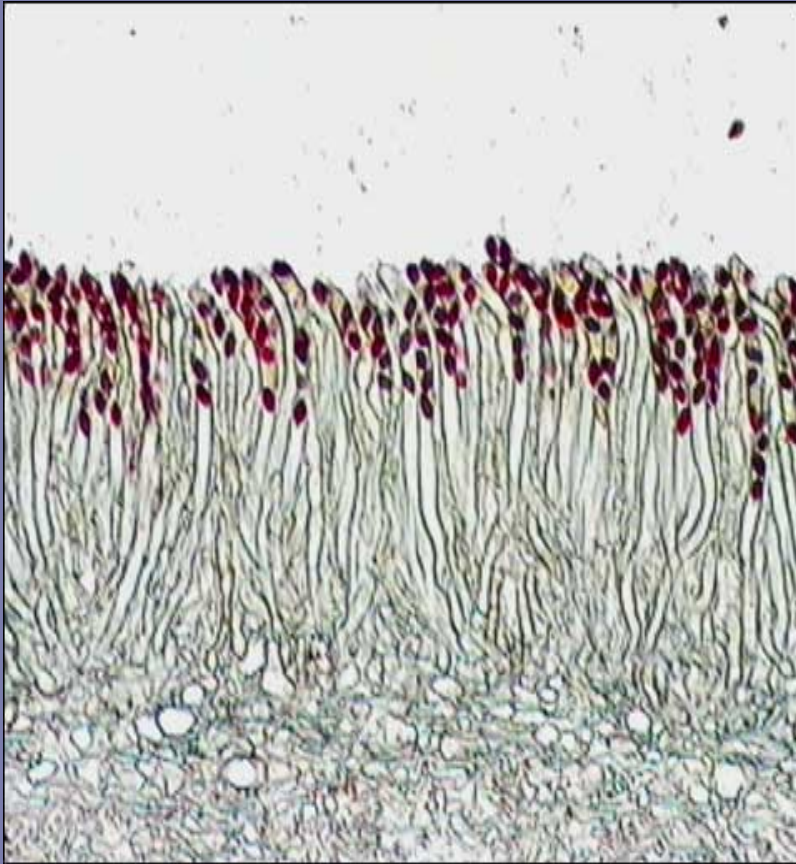
# *Saccharomyces cerevisiae* or brewer's yeast



- D. Eukarya
- K. Fungi
- Ph. Ascomycota
- Cl. Ascomycetes
- Magnification 1000x
- Vegetative cells are pink and have some buds. The sexual ascospores are blue, two to four to an ascus.

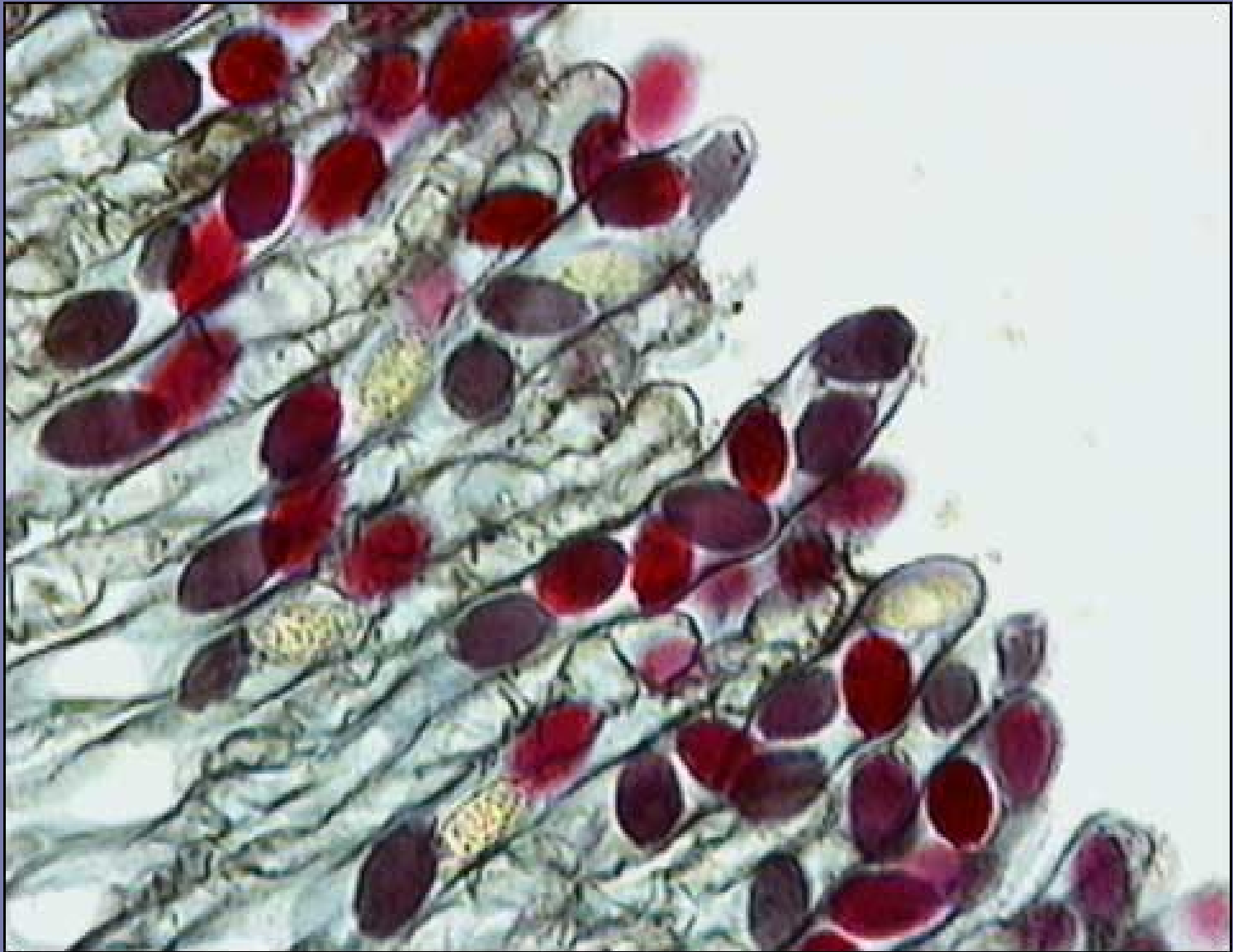


# *Morchella* mushroom cap



- D. Eukarya
- K. Fungi
- Ph. Ascomycota
- Cl. Ascomycetes
- Magnification 100x
- Xs thru cap.
- Ascospores contained within linear sac-like asci. 8 ascospores/ascus.





# *Morchella* mushroom cap



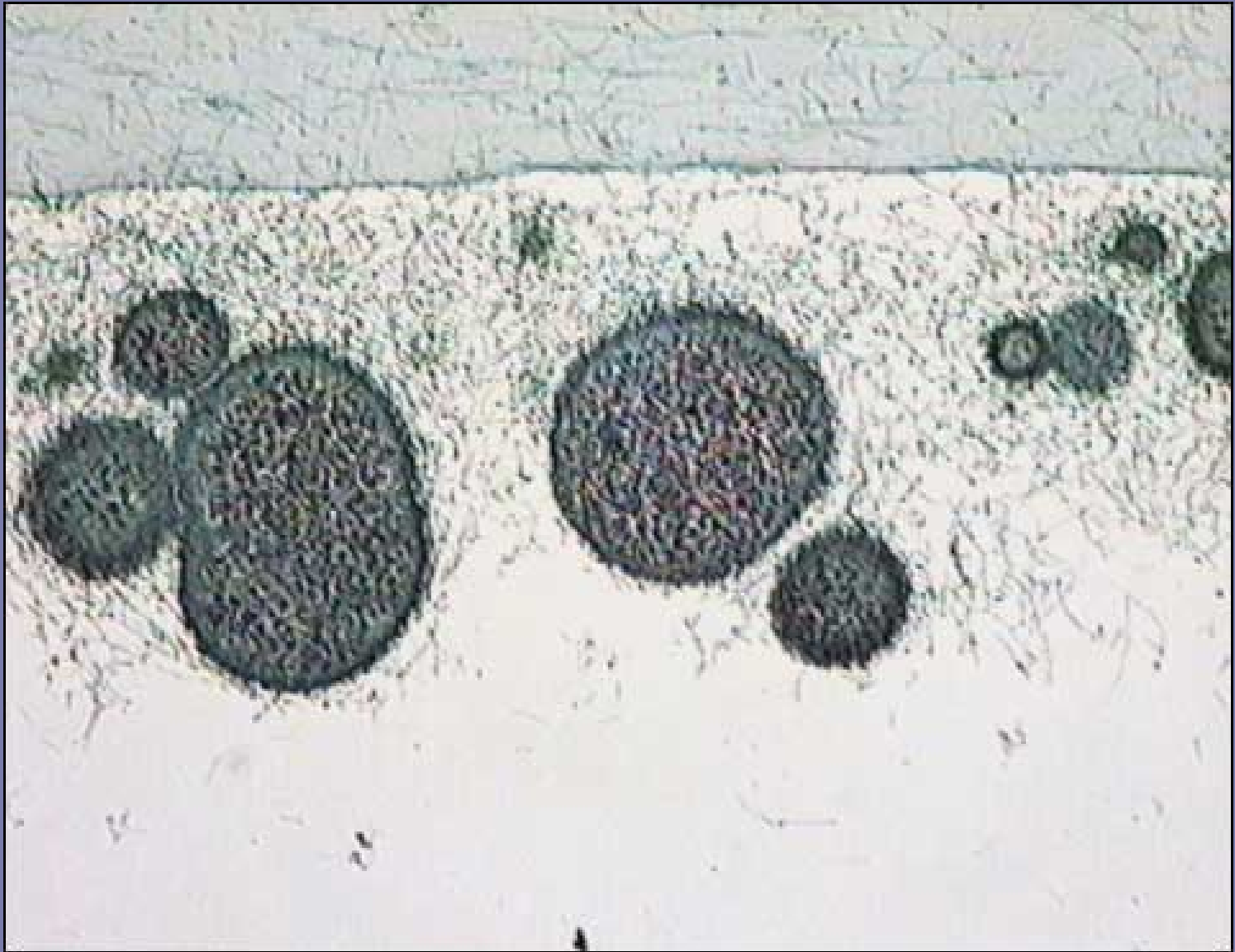
- D. Eukarya  
K. Fungi  
Ph. Ascomycota  
Cl. Ascomycets  
Magnification 400x  
Ascospores contained within  
linear sac-like asci. 8  
ascospores /ascus. Color  
variation is due to genetic  
variation due to sexual  
reproduction.



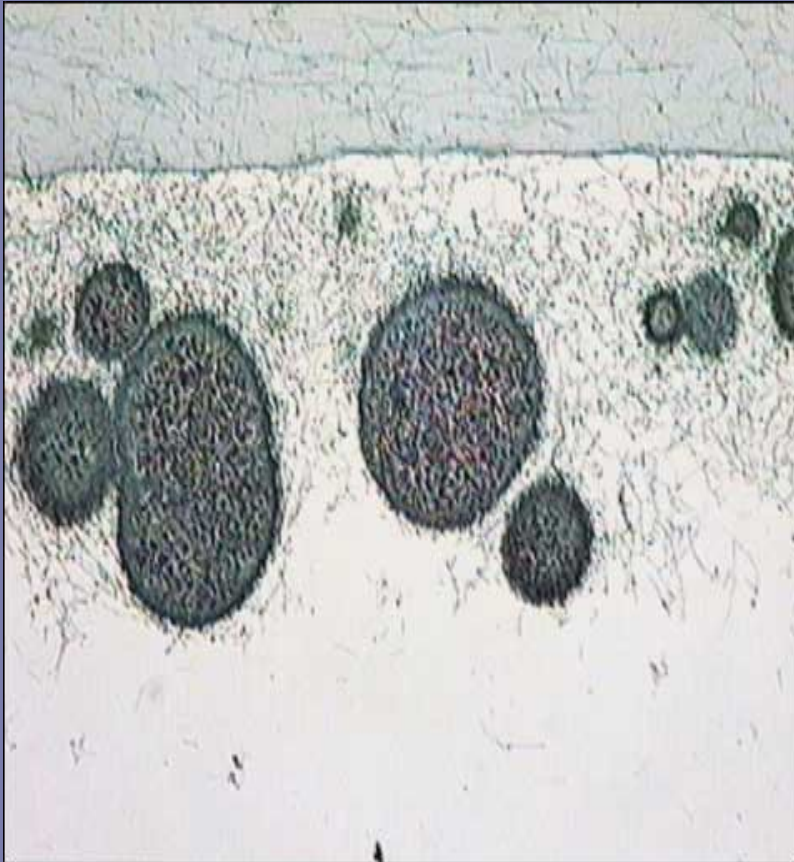
# *Penicillium chrysogenum* or *notatum*



- D. Eukarya
- K. Fungi
- Ph. Ascomycota
- Cl. Ascomycetes
- Magnification 400x
- Conidiospores are arranged in chains that extend from finger-like branches at the end of a conidiophore.

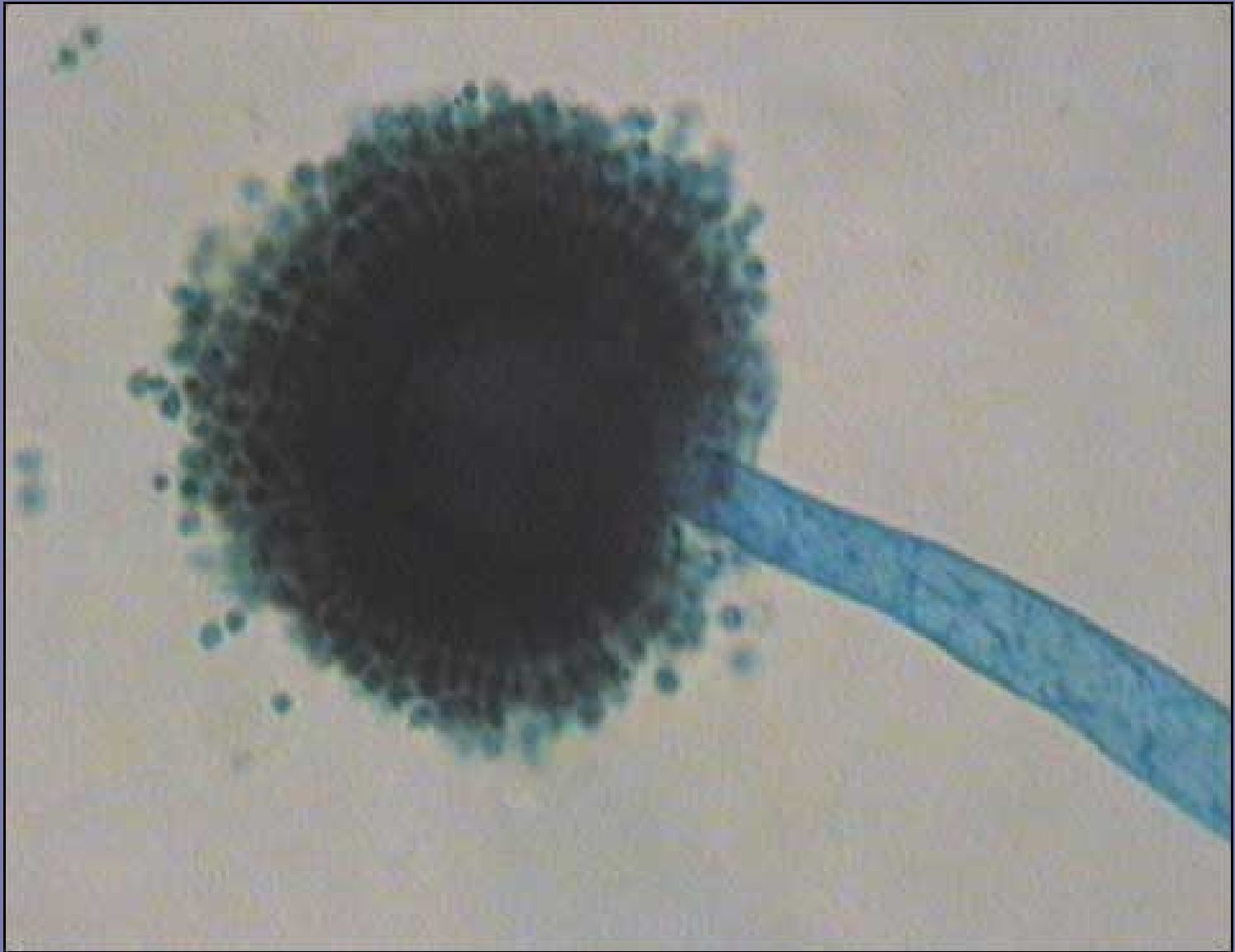


# *Penicillium chrysogenum* or *notatum*



- D. Eukarya
- K. Fungi
- Ph. Ascomycota
- Cl. Ascomycetes
- Magnification 100x
- Cleistothecia contain sac-like asci which contain small red sexual ascospores.
- Notice surrounding hyphae. Penicillium is the amorph name.

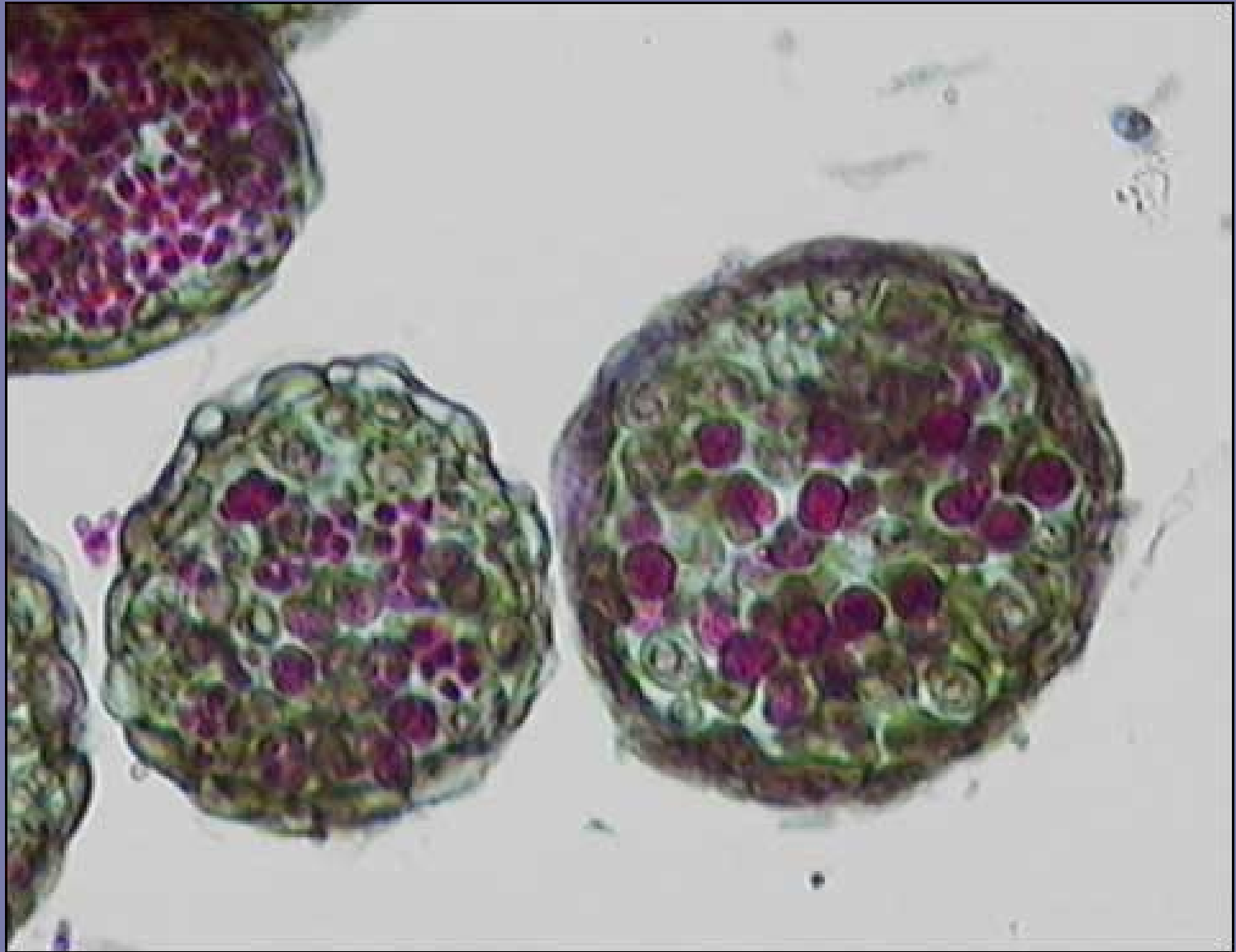




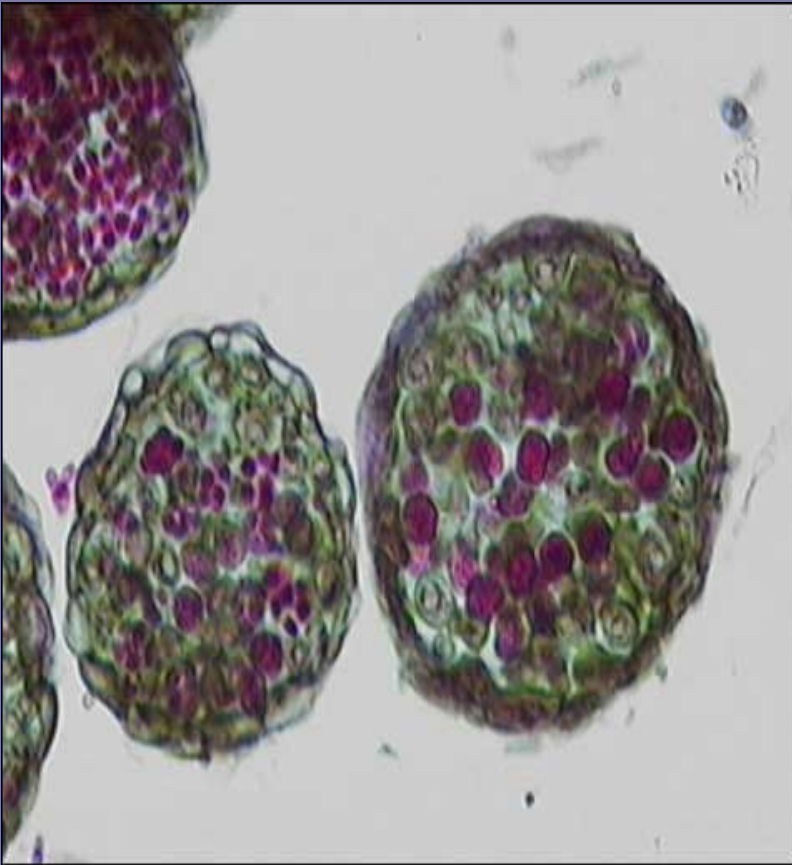
# *Aspergillus niger, flavus, and glaucus*



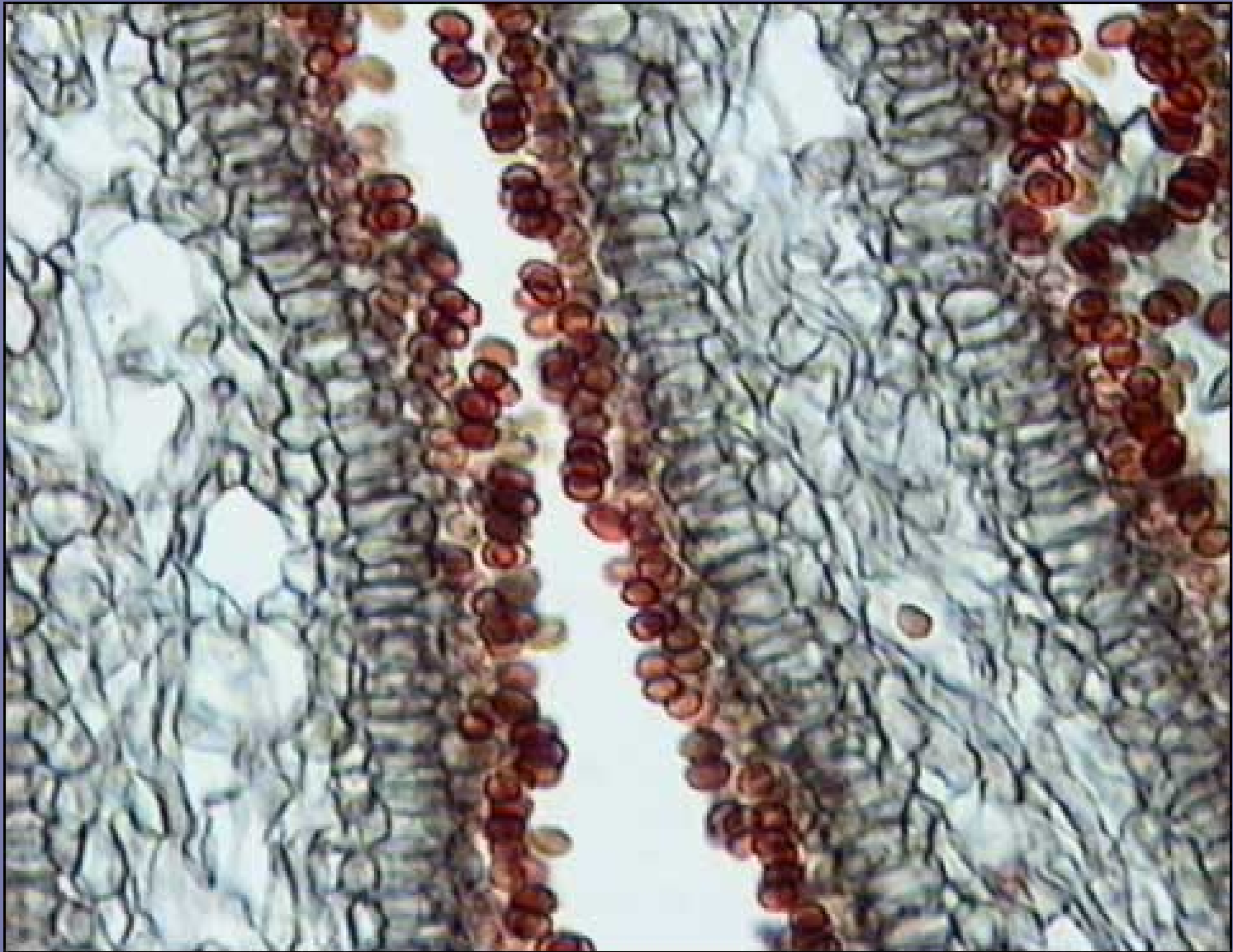
- D. Eukarya
- K. Fungi
- Ph. Ascomycota
- Cl. Ascommycetes
- Magnification 400x
- Asexual conidiospores arranged in short chains extending from a conidiophore.



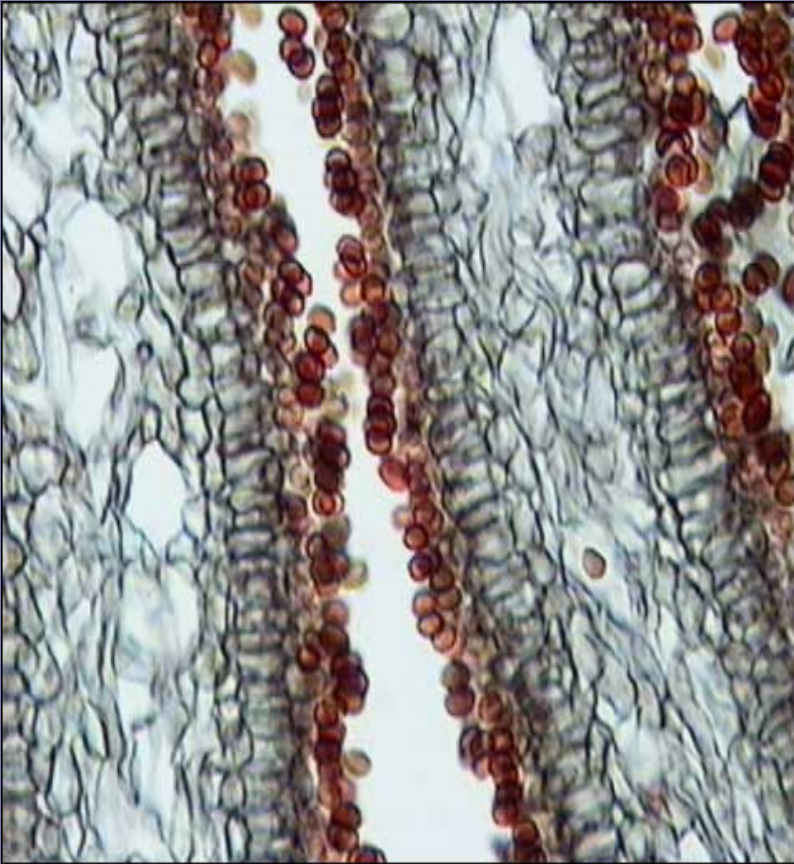
# *Aspergillus niger, flavus, and glaucus*



- D. Eukarya
- K. Fungi
- Ph. Ascomycota
- Cl. Ascomycetes
- Magnification 400x
- Cleistothecia with sac-like asci containing ascospores. *Aspergillus* is the anamorph name.

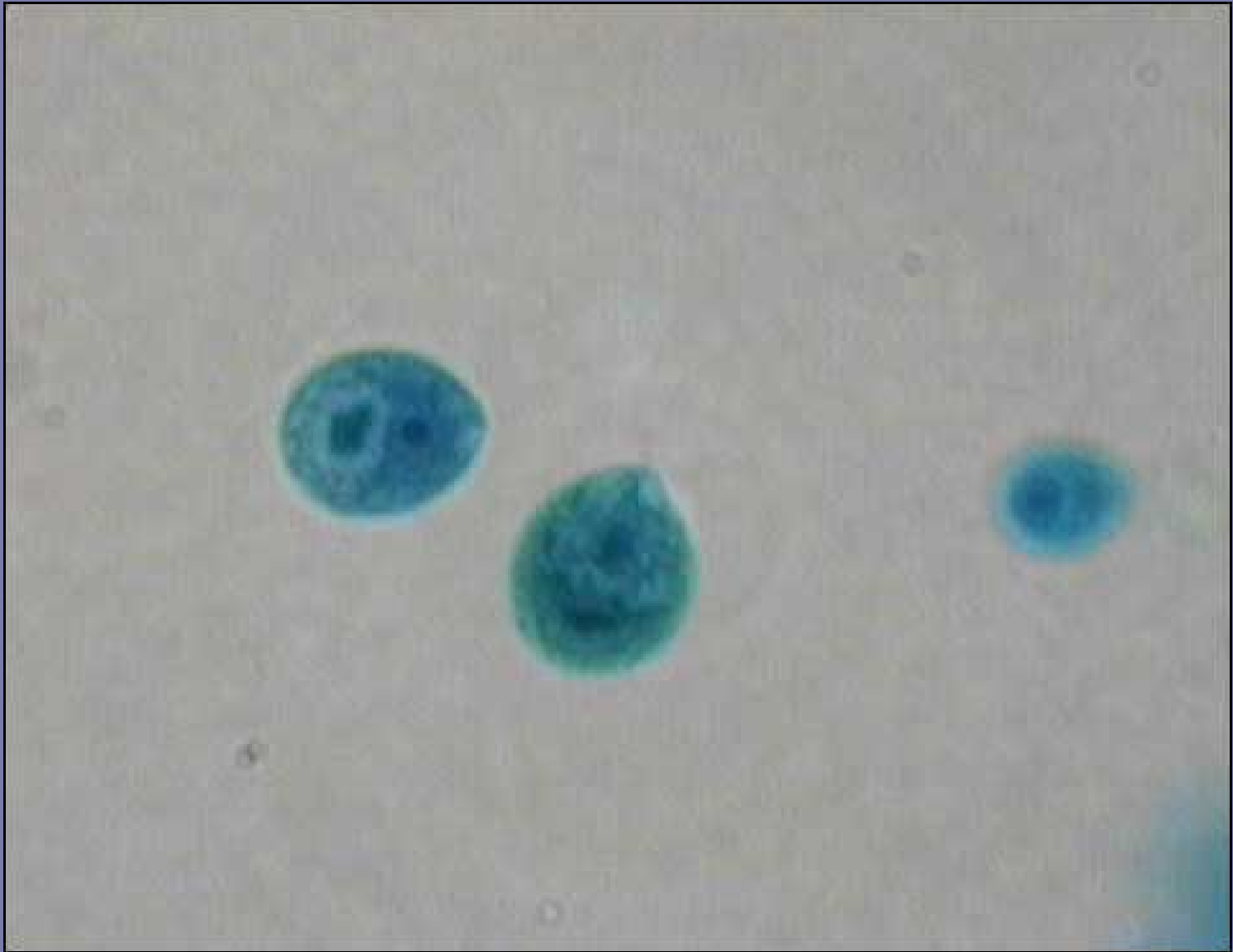


# *Coprinus comatus*

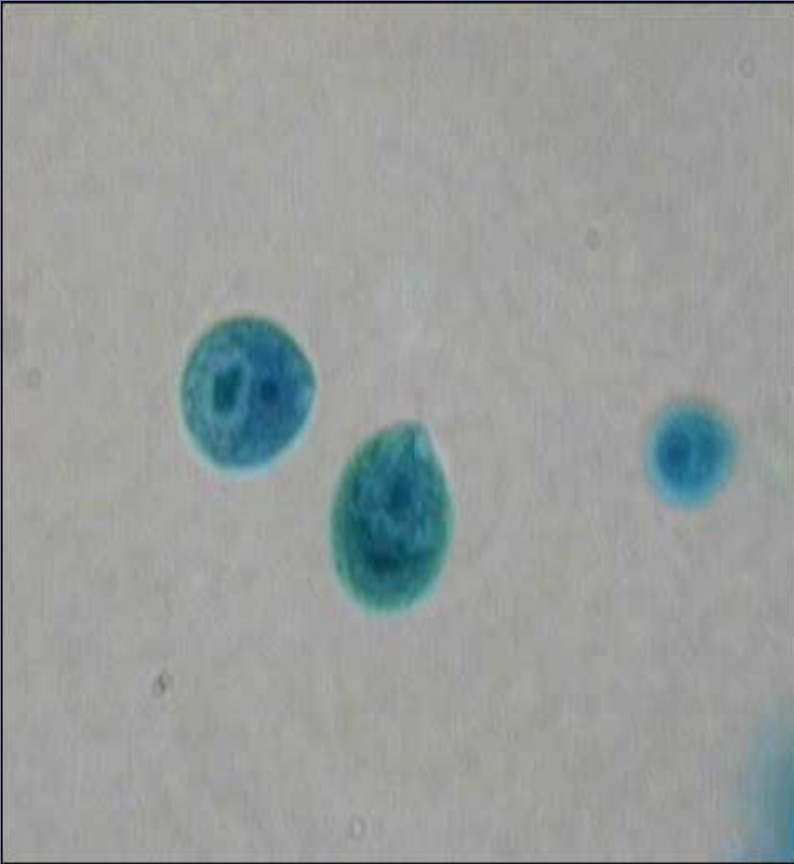


- D. Eukarya
- K. Fungi
- Ph. Basidiomycota
- Cl. Basidiomycetes
- Magnification 400x
- Sexual basidiospores are arranged in clusters along both surfaces of the gills or lamellae of the mushroom cap.





# *Chlamydomonas*



- D. Eukarya
- K. Protista
- Ph. Chlorophyta
- Magnification 1000x
- Single celled green algae w/  
2 flagella extending from the  
pointed end.

