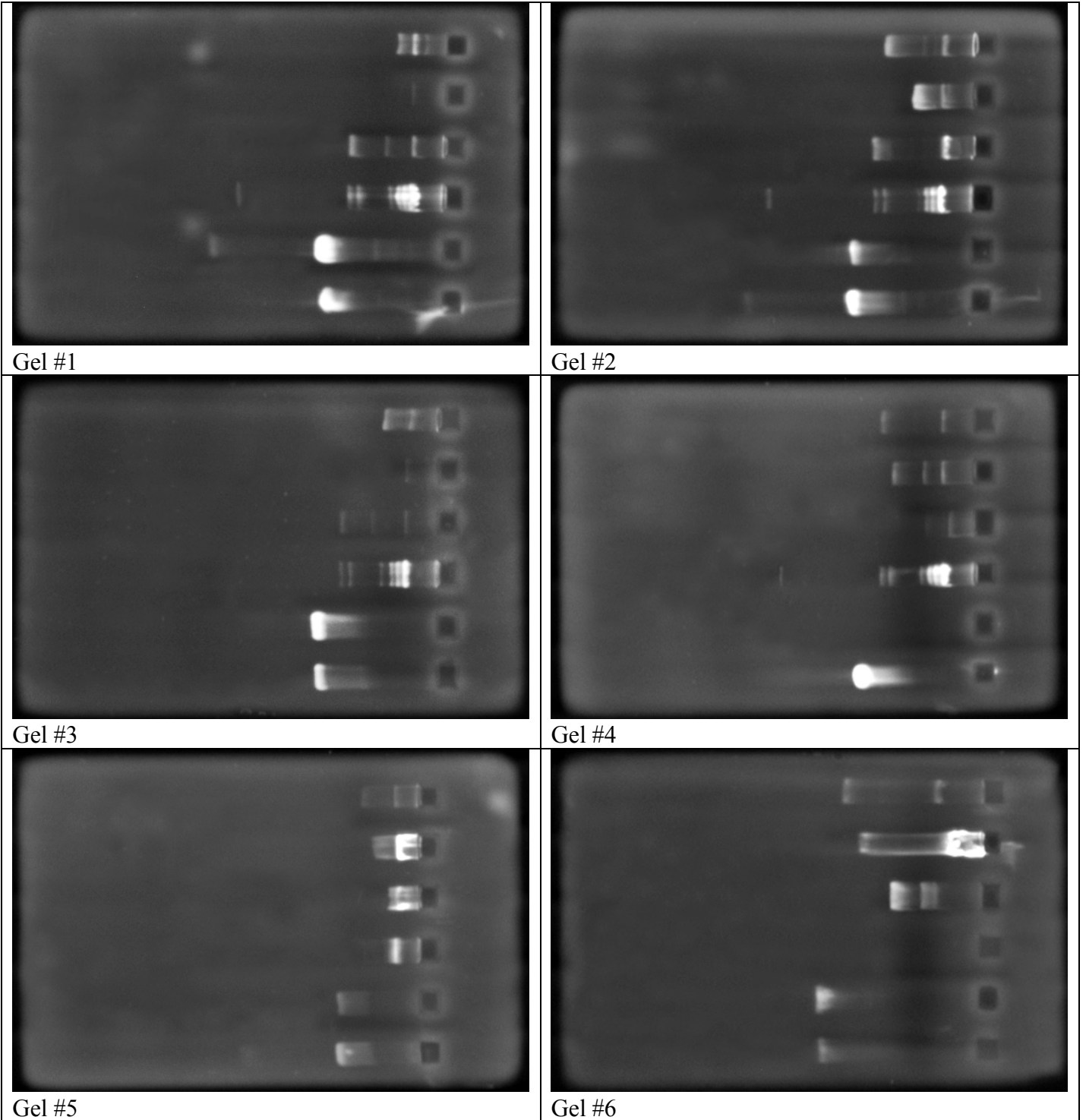
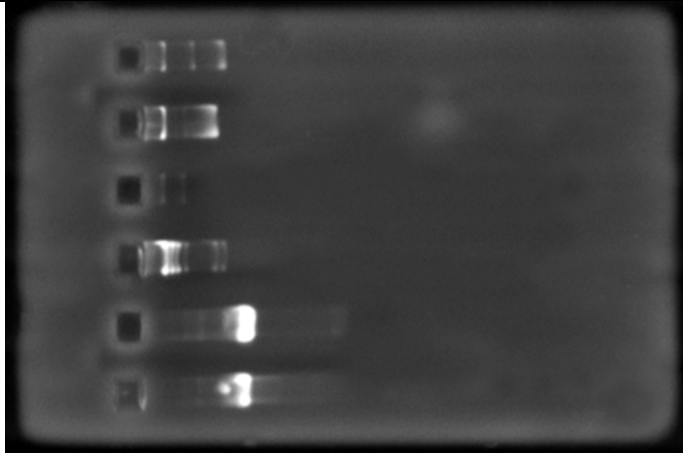


FALL 2014 - BIO. SCI. 4 - PLASMID AND PCR GELS (PAGE 1)

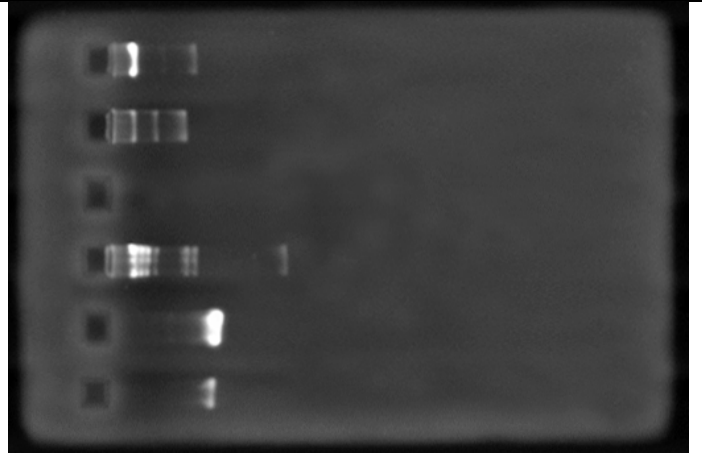


Lane numbers are 1-6 from top down. The calibration standard is Bacteriophage lambda DNA cut with the restriction enzyme Hind III for all gels (usually located in lane #4). Plasmid samples are pUC19, pGEM and pGLO. PCR product is 16S ribosomal DNA. RNA appears as faint white spots visible in some gels beyond the DNA.

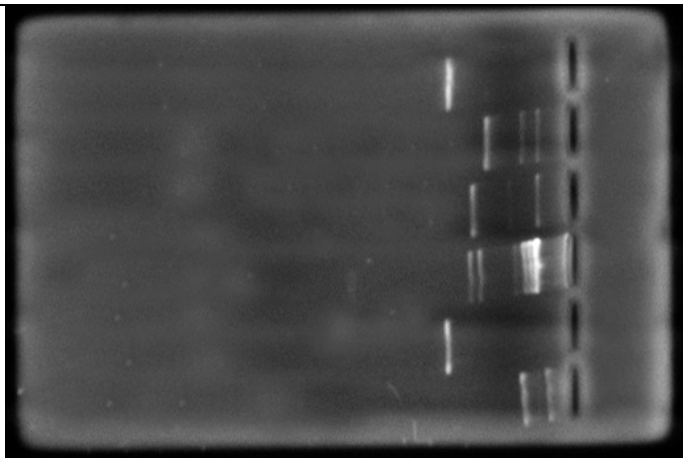
FALL 2014 - BIO. SCI. 4 - PLASMID AND PCR GELS (PAGE 2)



Gel #7



Gel #8



Gel #9

Lane numbers are 1-6 from top down. The calibration standard is Bacteriophage lambda DNA cut with the restriction enzyme Hind III for all gels (located in lane #4). Plasmid samples are pUC19, pGEM and pGLO. PCR product is 16S ribosomal DNA. RNA appears as faint white spots visible in some gels beyond DNA.